

TROUBLESHOOTING

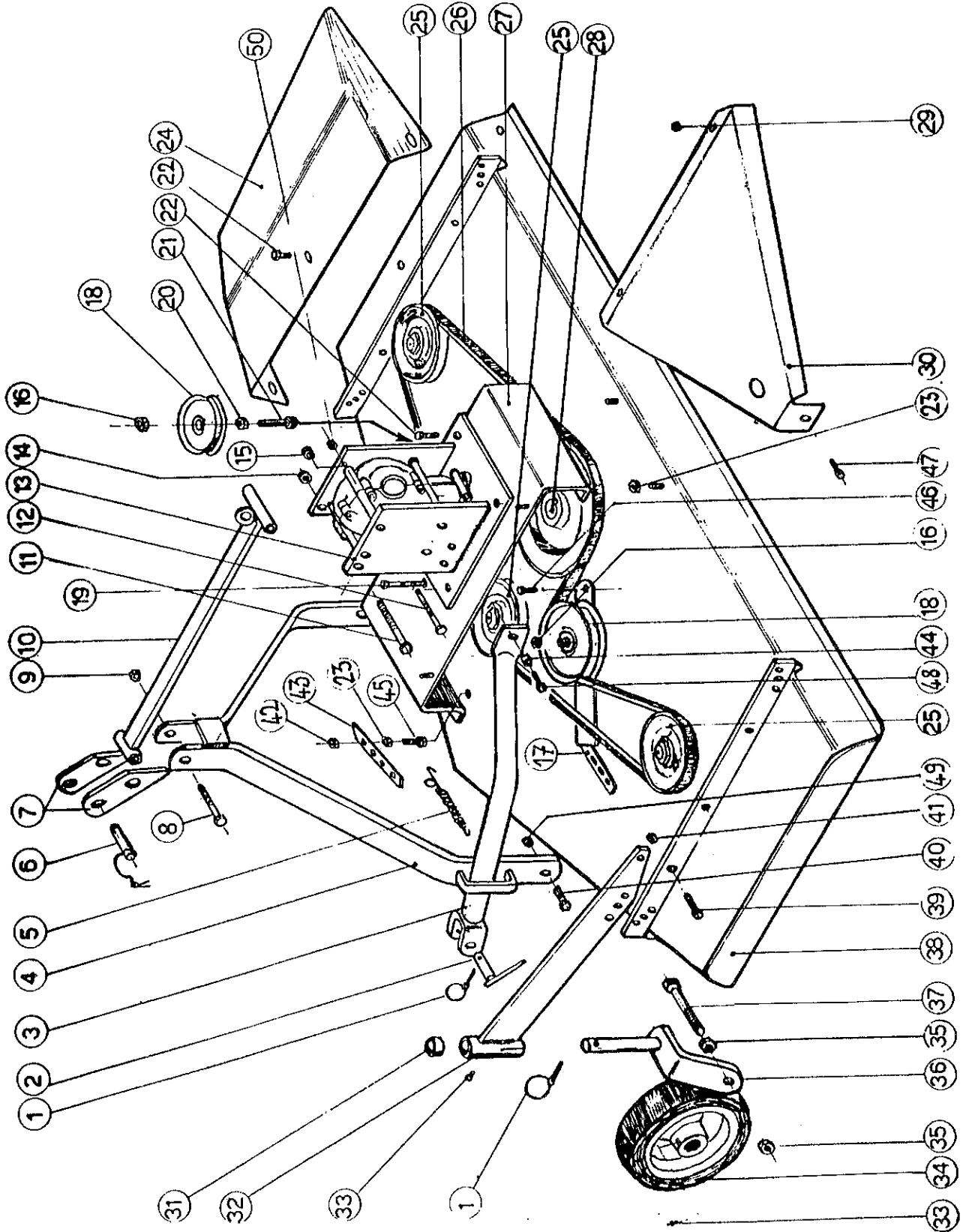
PROBLEM	POSSIBLE CAUSE	SOLUTION
UNEVEN CUTTING	Washer not between blade and nut	Check washer location at all 3 spindles
	Ground speed too fast	Shift to low gear
	Blades need sharpening	Sharpen blades
	Caster wheels uneven	Adjust wheel positions
BLADES TURNING BUT NOT CUTTING	Direction of blades is wrong	Blade should turn CCW when you FACE DECK BOTTOM. SEE INSTALLING BLADES SECTION
BELT SLIPPAGE	Lack of tension	Tighten Belt
	Object clogging mower	Remove
	Debris in sheaves	Clean sheaves
MOWER VIBRATES	Object wrapped around blade	Remove object
	Belt damaged	Replace belt
BELT SQUEAL	Belt slipping	Tighten belt
GRASS BUILD UP AT EXIT	Wet grass	Allow grass to dry
	Grass too high	Raise mower, shift to lower gear, make two passes over grass. Mow grass high 1st pass, 2nd pass cut to desired height.
	Tractor rpm too slow	Increase tractor rpm, check engine and PTO speeds.
BELTS ARE TIGHT WHEN INSTALLING	Wrong belt size	Check belt size.
	Installed belts incorrectly	See Replacing Belts section.
STREAKING CONDITIONS IN SWATH	Too wet to mow, blades cannot cut	Allow grass to dry, maintain engine speed and shift to lower gear.
	grass pressed down by wheels	
	Dull blade	Sharpen blade. SEE SHARPENING BLADES SECTION.



PARTS
ILLUSTRATION
MODEL NO.

THREE SPINDLE MOWER
FRAME
17-C14-711 — 17-C15-711

GR 17
SR 1
CAT. 89



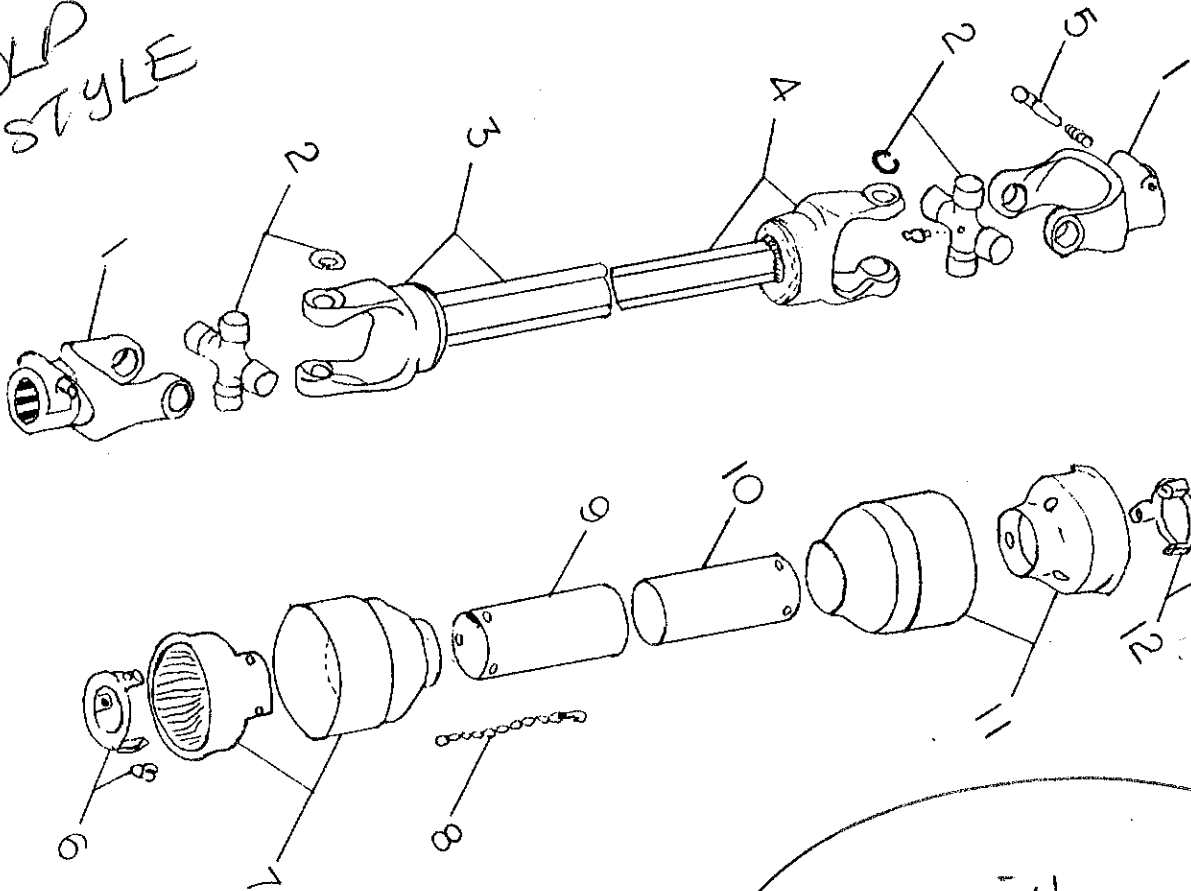


PARTS
ILLUSTRATION/LIST
MODEL NO.

THREE SPINDLE MOWER
PTO
17 - C14 - 711
17 - C15 - 711

GR 17
SR 1
CAT. 44
*CAT. 46

OLD
STYLE



Compl. shield 220-233E

ITEM #	PART #	DESCRIPTION	QTY.
1	022 001E	PUSH PIN YOKE	2
2	012 004E	CROSS & BEARING	2
3	221 008E	OUTER TUBE YOKE C14	1
	221 009E	OUTER TUBE YOKE C15	1
4	220 908E	INNER TUBE YOKE C14	1
	220 909E	INNER TUBE YOKE C15	1
5	026 004E	PUSHPIN SET 1 3/8"	2
6	012 007E	LOCKING COLLAR OUTER	1
6A	000 019E	LOCKING COLLAR BOLTS - PLASTIC	6
7	013 016E	GUARD CONE OUTER	1
8	016 025E	SAFETY CHAIN	2
9	121 109E 113E	FEMALE SHIELD	1
10	121 209E 213E	MALE SHIELD	1
11	013 015E	GUARD CONE INNER	1
12	012 006E	LOCKING COLLAR INNER	1
	*948 104B	PTO COMP. T20 800MM C14	
	*948 105B	PTO COMP. T20 900MM C15	

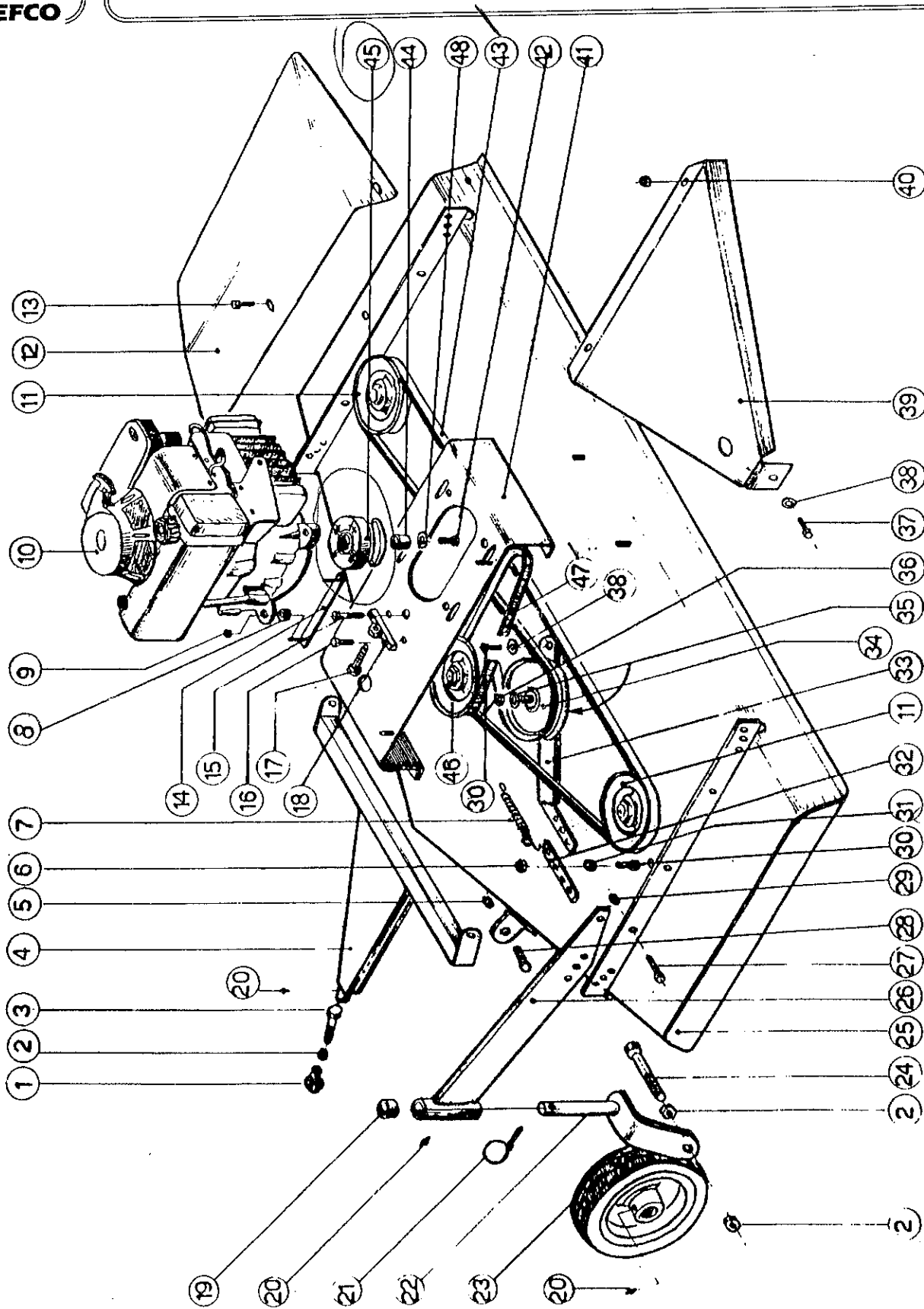


PARTS
ILLUSTRATION
MODEL NO.

THREE SPINDLE MOUNT
FRAME

17 - CE4 - 711
17 - CE5 - 711

GR 17
SR 1
CAT. 89



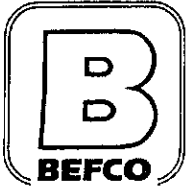


PARTS
ILLUSTRATION
MODEL NO.

THREE SPINDLE MOWER
FRAME
17-C14-711 — 17-C15-711

GR 17
SR 1
CAT. 89

ITEM #	PART #	DESCRIPTION	QTY.
1	000 8505 <i>000 6010</i>	LYNCH PIN	6
2	000 8501	HITCH PIN	2
3	000 8491	LOWER HITCH ARM C14	2
	000 8661	LOWER HITCH ARM C15	2
4	000 8481	A-FRAME 3 PT. HITCH	1
5	000 8586	SPRING	1
6	003 8320	TOP HITCH PIN	1
7	000 8469	TOP 3 PT. HITCH PLATE	2
8	003 7368	M14 X 120 BOLT	1
9	003 0358	M14 NUT	1
10	000 8463	TIE ROD 3 PT. HITCH C14	1
	000 8654	TIE ROD 3 PT. HITCH C15	1
11	000 8471	M12 X 150 BOLT	1
12	000 1216	M10 X 150	4
13	000 8443	GEARBOX SUPPORT	1
14	003 0064	M12 NUT	1
15	000 1042	M12 NUT	4
16	000 5507	M20 NUT	2
17	000 8563	BELT TENSIONER SUPPORT	1
18	000 8561	BELT TENSIONER PULLEY	2
19	001 5273	M10 X 110 BOLT	1
19A	000 845	SPACER TUBE	1
20	000 8578	M20 NUT	1
21	000 8576	M20 X 65 BOLT	1
22	003 3176	M10 X 25 BOLT	7
23	000 1279	M10 NUT	4
24	000 6781	GRASS DEFLECTOR C14	1
	000 6521	GRASS DEFLECTOR C15	1
25	000 8531	120 X 1 PULLEY C14	1
	000 8661	130 X 1 PULLEY C15	1
26	000 8630	B98 BELT C14	1
	000 8670	B112 BELT C15	1
27	000 8436	GEARBOX FLANGE C14	1
	000 8436B	GEARBOX FLANGE C15	1
28	000 8623	SPB 250 X 1 PULLEY	1
29	001 4106	M10 LOCK NUT	4
30	000 8418	BELT GUARD C14	2
	000 8646	BELT GUARD C15	2
31	000 8520	CUTTING HEIGHT SPACER	4
32	000 8507	WHEEL ARM C14 & C15	4
33	000 6635	M6 PRESS GREASE FITTING	4
34	000 8523 - <i>8526</i>	SERIES 1 CYCLONE WHEEL	4
35	003 8370	M18 NUT	8
36	010 8516	WHEEL YOKE RIGHT C14&5	2
	020 8516	WHEEL YOKE LEFT C14&5	2
37	006 4024	M18 X 110 BOLT	4



PARTS
ILLUSTRATION
MODEL NO.

THREE SPINDLE MOWER
FRAME
17-C14-711 — 17-C15-711

GR 17
SR 1
CAT. 89

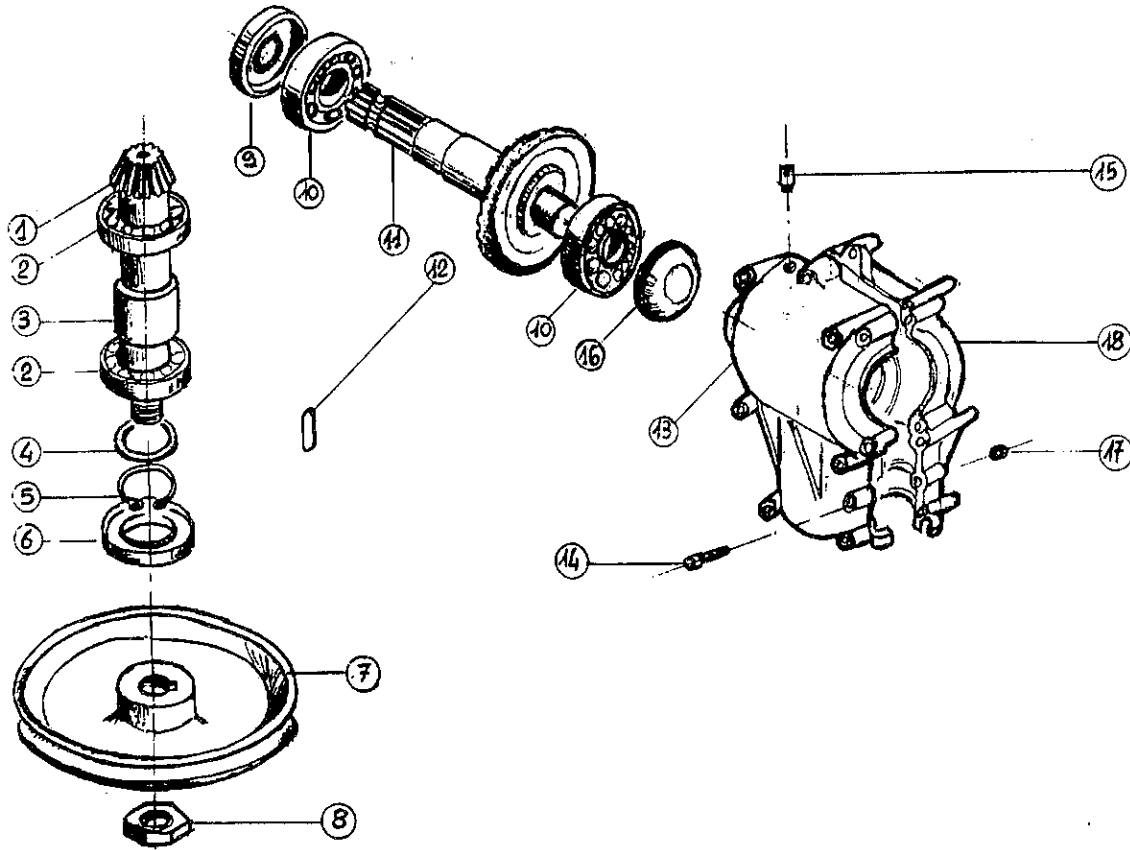
ITEM #	PART #	DESCRIPTION	QTY.
38	000 8402	MOWER DECK C14	1
	000 8631	MOWER DECK C15	1
39	000 8511	M12 X 35 BOLT	8
40	007 4232	M14 X 40 BOLT	2
41	009 4139	M12 LOCK NUT	8
42	003 0156	M10 NUT	8
43	000 8571	HITCH PLAT	1
44	000 8495	LOWER HITCH SPACER C14&5	2
45	000 1278	M10 X 30 BOLT	1
46	009 1281	M10 X 35 BOLT	1
47	000 6349	M10 X 20 BOLT	2
48	000 7255	M12 X 35	2
49	000 1177	M14 NUT	2



PARTS
ILLUSTRATION/LIST
MODEL NO.

THREE SPINDLE MOWER
GEARBOX
17-C14-711 — 17-C15-711

GR 17
SR 1
CAT. 89



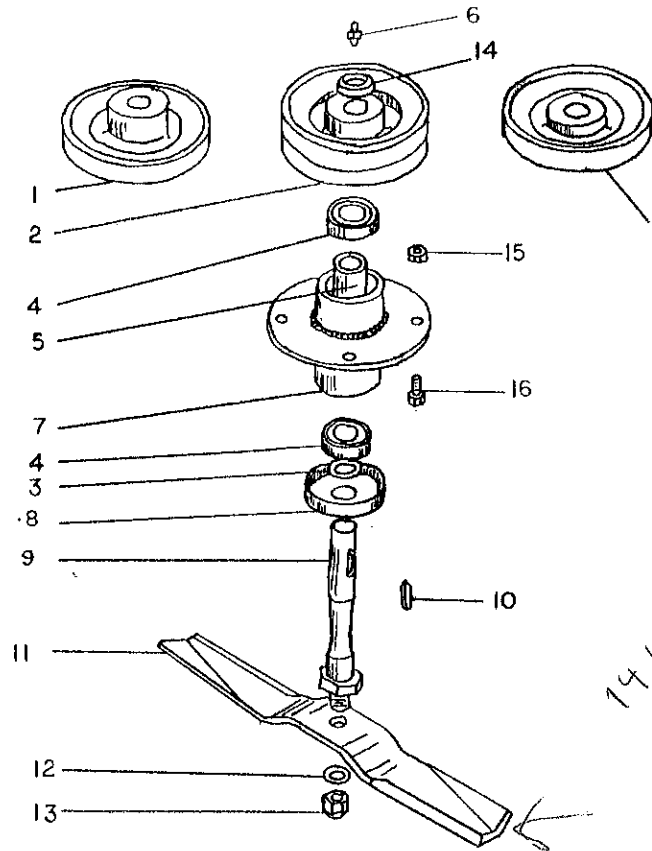
ITEM #	PART #	DESCRIPTION	QTY.
1	005 0192	PINION GEAR	1
2	002 5332	BEARING 6207	2
3	001 0196	SPACER	1
4	003 4196	SPACER	1
5	004 2122	M35 SNAP RING	1
6	000 2295	35.62.10 OIL SEAL	1
7	000 8623	SPB 250 X 1 PULLEY	1
8	000 6698	M25 LOCK NUT	1
9	001 0192	40.68.10 OIL SEAL	1
10	001 2149	BEARING 6208	2
11	000 8603	SHAFT THROUGH DRIVE	1
12	000 6689	KEY 8 X 7 X 30	1
13	000 8594	GEARBOX HOUSING W/HOLE	1
14	001 0173	M8 X 50 BOLT	7
15	001 0177	BREATHER CAP	1
16	000 8609	COVER	1
17	000 6513	M8 NUT	7
18	330 0322	GEARBOX HOUSING NO HOLE	1
	050 0540	GEARBOX COMPLETE C14&5	1



PARTS
ILLUSTRATION/LIST
MODEL NO.

THREE SPINDLE MOWER
ROTOR & BLADE
17-CXX-711

GR 17
SR 2
CAT. 89
*CAT. 40



14,15-216
000-6795
6641
6845

ITEM #	PART #	DESCRIPTION	QTY.
1	000 8531	SPB 120 X 1 PULLEY CE4/C14	2
	000 8666	SPB 130 X 1 PULLEY CE5/C15	2
2	000 8792	SPB 120 X 2 PULLEY CE4/C14	1
	000 8936	SPB 130 X 2 PULLEY CE5/C15	1
3	000 6606	SPACER-RING	3
4	000 6634	6205Z BEARING	3
5	000 8536	SPACER	3
6	002 9036	GREASE FITTING M8	3
7	000 8538	SHAFT SUPPORT	3
8	000 6636	COVER	3
9	000 8545	BLADE HOLDER SHAFT	3
10	000 6639	KEY 8 X 7 25	3
11	*000 6795	BLADE CE4	3
	*000 6641	BLADE Ø5	3
12	000 6642	M18 WASHER	3
13	000 6643	M18 LOCKNUT	3
14	000 6698	M25 LOCKNUT	3
15	003 0156	M10 NUT	12
16	000 6634	6205Z BEARING	3
17	000 1241	BOLT M10 X 25	12
	000 8537	SPINDLE COMPLETE	



**PARTS
LIST
MODEL NO.**

**THREE SPINDLE MOWER
FRAME
17 - CE4 - 711
17 - CE5 - 711**

**GR 17
SR 1
CAT. 89**

ITEM #	PART #	DESCRIPTION	QTY.
1	000 8773	BALL JOINT	1
2	003 8370	NUT M18	9
3	003 7386	BOLT M18X80	1
4	000 8765	DRAW BAR	1
5	003-0358	NUT M14	2
6	003 0156	NUT M10	1
7	000 8586	SPRING	1
8	000 8870	SPACER	4
9	009 1384	LOCKNUT M8	4
10	000 8858	ENGINE	1
11	000 8531	PULLEY 120 X 1 CE4	
	000 8666	PULLEY 130 X 1 CE5	2
12	000 6781	DEFLECTOR CE4	1
	000 6521	DEFLECTOR CE5	1
	000 6521	DEFLECTOR CE5	1
13	000 6349	BOLT M10 X 80	3
14	000 8861	ENGINE PLATE SHORT	1
	000 8865	ENGINE PLATE LONG	1
15	001 5273	BOLT M10 X 110	1
16	009 1281	BOLT M10 35	2
17	000 8879	BOLT M10 X 80	1
18	000 8872	BELT TENSIONER PLATE	1
19	000 8520	SPACER	4
20	000 6635	GREASE FITTING	9
21	000 8505	LYNCH PIN	4
22	010 8516	WHEEL YOKE RIGHT FRONT	1
	010 8516E	WHEEL YOKE RIGHT REAR	1
	020 8516	WHEEL YOKE LEFT FRONT	1
	020 8516E	WHEEL YOKE LEFT REAR	1
23	000 8523	WHEEL	4
24	006 4024	BOLT M18 X 110	4
25	000 8402	FRAME CE4	1
	000 8631	FRAME CE5	1
26	000 8507	WHEEL ARM FRONT	2
	000 8507E	WHEEL ARM REAR	2
27	000 7255	BOLT M12 X 35	8
28	000 1526	BOLT M14 X 35	2
29	001 3345	LOCKNUT M12	8
30	000 1278	BOLT M10 X 30	2
31	009 0150	M10 NUT	1
32	000 8571	HITCH PLATE	1
33	000 8563	BELT TENSIONER SUPPORT	1
34	000 8561	PULLEY BELT TENSIONER	1
35	000 8568	M20 WASHER	2
36	000 5581	M20 NUT	1
37	009 2317	BOLT M10 X 16	2



PARTS
LIST
MODEL NO.

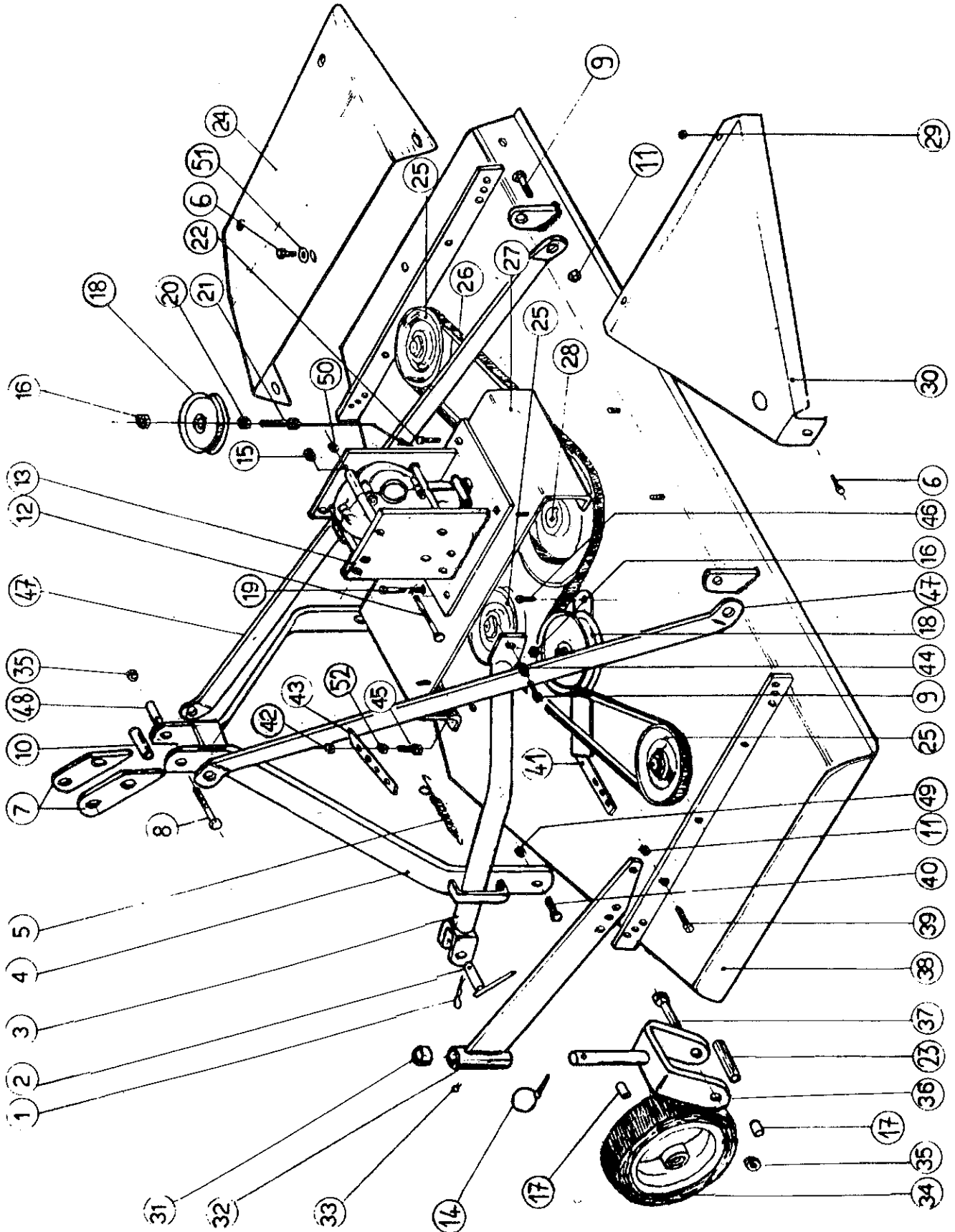
THREE SPINDLE MOWER
FRAME
17-CE4-711 — 17-CE5-711

GR 17
SR 1
CAT. 89

ITEM #	PART #	DESCRIPTION	QTY.
38	000 2034	M10 WASHER	2
39	000 8418	BELT GUARD CE4	2
	000 8646	BELT GUARD CE5	2
40	001 5237	M10 LOCKNUT	4
41	000 8436	ENGINE SUPPORT PLATE CE4	1
	000 8436B	ENGINE SUPPORT PLATE CE5	1
42	000 8855	7/16 X 1" UNF BOLT	1
43	000 8847	B105 BELT CE4	1
	000 8942	B124 BELT CE5	1
44	000 8853	SPACER	1
45	000 8851	CENTRIFUGAL CLUTCH	1
46	000 8792	SPB 120 X 2 PULLEY CE4	1
	000 8936	SPB 130 X 2 PULLEY CE5	1
47	000 8848	B34 BELT CE4	1
	001 5616	B36 BELT CE5	1
48	007 6106	M12 WASHER	1
	501 678B	6MM PIN	2
	501 679B	HAIRPIN COTTER 1" long	2
	501 678B	1/4 X 2 1/4 PIN	1
	501 679B	1" HAIRPIN COTTER	1
	501 680B	KILL SWITCH BKT.	1
	501 681B	KILL SWITCH & KEY	1
	501 682B	THROTTLE	1
	501 683B	THROTTLE/KILL SWITCH SUPPORT & STAND	1
	501 688B	M6 X 45 BOLT and M6 LOCKNUT	1



17-C16-712



SPECIFICATIONS

MODEL	C14	C15	CE4	CE5
CUTTING WIDTH	48"	60"	48"	60"
LENGTH	58"	70"	58"	70"
WIDTH	50"	50"	50"	50"
HEIGHT	30"	30"	37"	37"
WEIGHT (lbs)	270	330	220	270
CUTTING HEIGHT RANGE	½" to 4"		½" to 4"	
4 CASTER WHEELS	8 X 2.5 SEMI PNEUMATIC		8 X 2.5 SEMI PNEUMATIC	
HITCH	3 POINT CAT 1		CAT 1 SWIVEL BALL	
DRIVELINE	STD. 540 RPM 1 ³ / ₈ " — 6 SPINE		NA	
RECOMMENDED PTO HP	10-30	20-30	NA	
PTO SPEED	540 RPM		NA	
NO. OF BLADES	3		3	
BLADE RPM	3037	2803	2769	2571
BLADE TIP SPEED ft./min.	13,140	14,725	11,980	13,508
BELT DRIVE	B98	B112	B105 & B33	B124 & B35
DRIVE PULLEY DIA.	250mm		4½" CENTRIFUGAL CLUTCH	
SPINDLE PULLEY DIA. (mm)	120	130	120	130
GEARBOX RATIO	1:2.8		NA	
ENGINE SIZE	NA		8HP I/C	10HP I/C

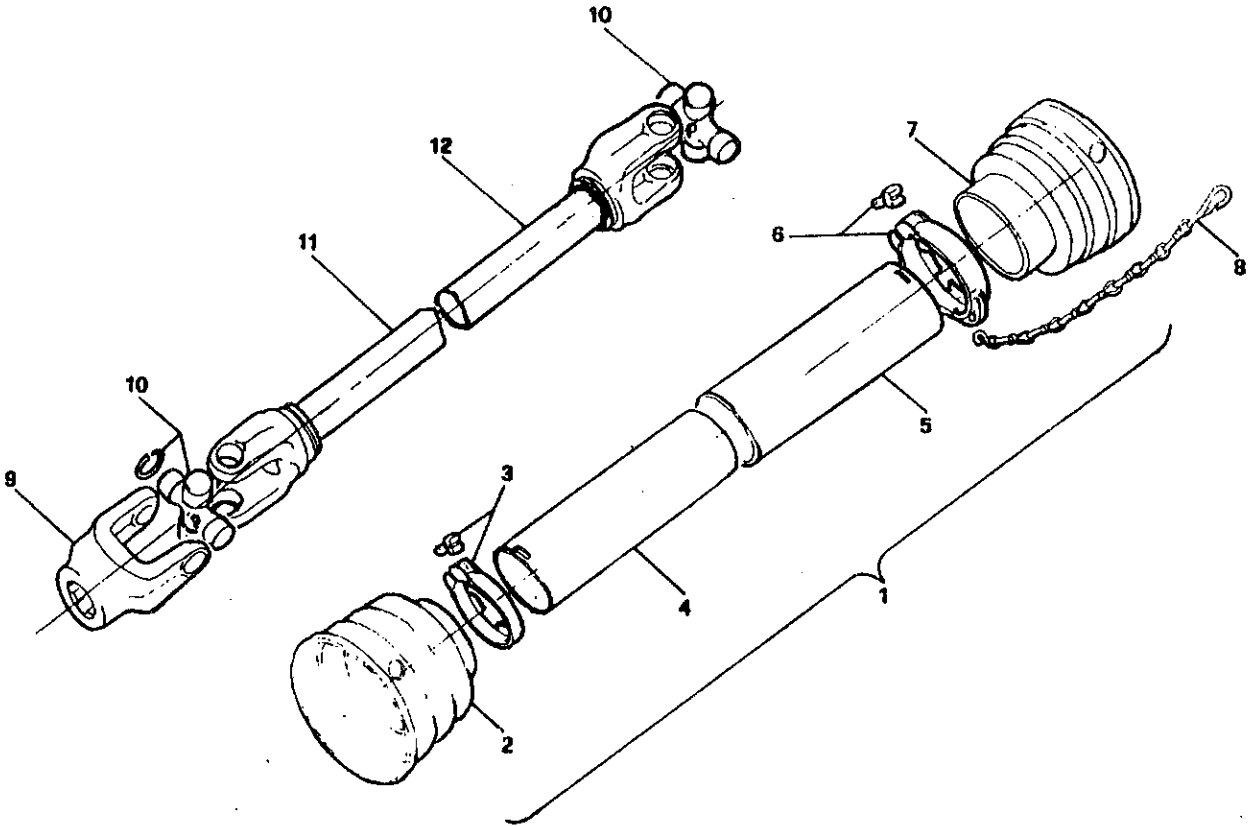


**CYCLONE C1 180
FRAME AND TRANSMISSION
17-C16-712**

ITEM	PART #	PREVIOUS #	DESCRIPTION	NO.
1	009 1507		COTTER PIN 0 4	2
2	000 8501		PIN HITCH	2
3	000 8805		HITCH BLOCK	2
4	000 8481		THREE POINT HITCH	1
5	000 8586		SPRING	1
6	000 6349		BOLT 10 x 20	5
7	000 6895		PLATE	2
8	007 0582		BOLT 14 x 130	1
9	000 7255		BOLT 12 x 35	4
10	000 6558		SPACER OUTER	1
11	009 4139		NUT-SELF LOCKING 0 12	10
12	000 1216		BOLT 10 x 150	4
13	000 8443		GEARBOX SUPPORT	1
14	000 8505		LYNCH PIN	4
15	000 1042		NUT 0 12	4
16	000 5507		NUT 0 20	2
17	000 8842		SPACER	8
18	000 8561		PULLEY-BELT TENSIONER	2
19	001 5273		BOLT 10 x 110	1
20	000 5508		NUT 0 20	1
21	000 8576		BOLT 20 x 65	1
22	003 3176		BOLT 10 x 25	4
23	000 8841		SPACER	4
24	000 6831		DEFLECTOR	1
25	000 8881		PULLEY SPB 160 x 1	3
26	000 8950		BELT B140	1
27	000 8431		FLANGE, GEARBOX	1
28	000 8623		PULLEY SPB 250 x 1	1
29	001 5237		NUT-SELF LOCKING 0 10	4
30	000 8961		PROTECTION BELT	2
31	000 8520		SPACER	4
32	000 8821		ARM, WHEEL	4
33	000 1065		GREASE FITTING	4
34	000 8530		WHEEL	4
35	003 0358		NUT 0 14	5
36	000 8831		YOKE-WHEEL	4
37	000 6615		BOLT 14 x 140	4
38	000 8945		MAIN-FRAME	1
39	004 4115		BOLT 12 x 40	8
40	007 4232		BOLT 14 x 40	2
41	000 8563		SUPPORT, BELT-TENSIONER	1
42	003 0156		NUT 0 10	1
43	000 8933		HITCH-PLATE	1
44	000 8495		SPACER	2
45	000 1278		BOLT 10 x 30	1
46	009 1281		BOLT 10 x 35	1
47	000 8775		TOP HITCH ARM	2
48	000 6898		SPACER-INNER	1
49	000 1177		NUT 0 14	2
50	001 5360		NUT 0 10	4
51	003 0157		FLAT WASHER 0 10	3
52	000 1279		NUT 0 10	1



**CYCLONE C1
PTO SHAFT
17C16-712**



ITEM	PART #	DESCRIPTION	NO.
1	000 8691	SHIELD COMPLETE MOD. 120	1
	000 8692	SHIELD COMPLETE MOD. 150	1
	000 8555	SHIELD COMPLETE MOD. 180	1
2	000 8694	GUARD CONE INNER	1
3	002 1219	LOCKING-RING INNER	1
4	000 8696	TUBE-SHIELD MALE MOD. 120	1
	000 8698	TUBE-SHIELD MALE MOD. 150	1
	000 8956	TUBE-SHIELD MALE MOD. 180	1
5	000 8697	TUBE-SHIELD FEMALE MOD. 120	1
	000 8699	TUBE-SHIELD FEMALE MOD. 150	1
	000 8957	TUBE-SHIELD FEMALE MOD. 180	1
6	002 1216	LOCKING-RING OUTER	1
7	000 8695	GUARD CONE OUTER	1
8	004 1176	SAFETY CHAIN	2
9	002 1237	YOKE TRACTOR END	2
10	002 1238	CROSS & BEARING	2
	000 8683	SHAFT MALE MOD. 120	1
	000 8687	SHAFT MALE MOD. 150	1
11	000 8959	SHAFT MALE MOD. 180	1
	000 8684	SHAFT FEMALE MOD. 120	1
	000 8688	SHAFT FEMALE MOD. 150	1
12	000 8960	SHAFT FEMALE MOD. 180	1